

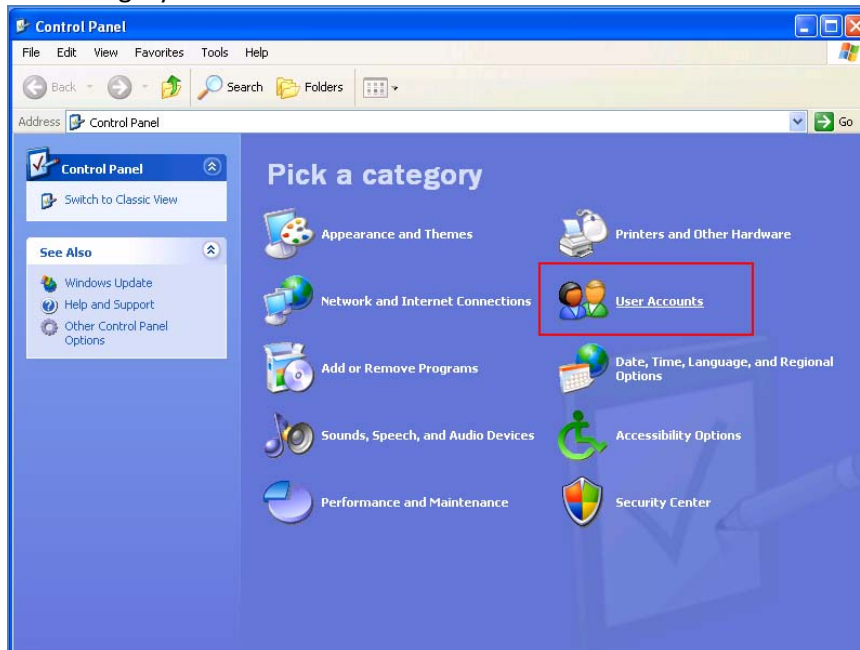
CREDENTIAL MANAGER

A. Credential Manager pada OS Windows Vista / Windows XP

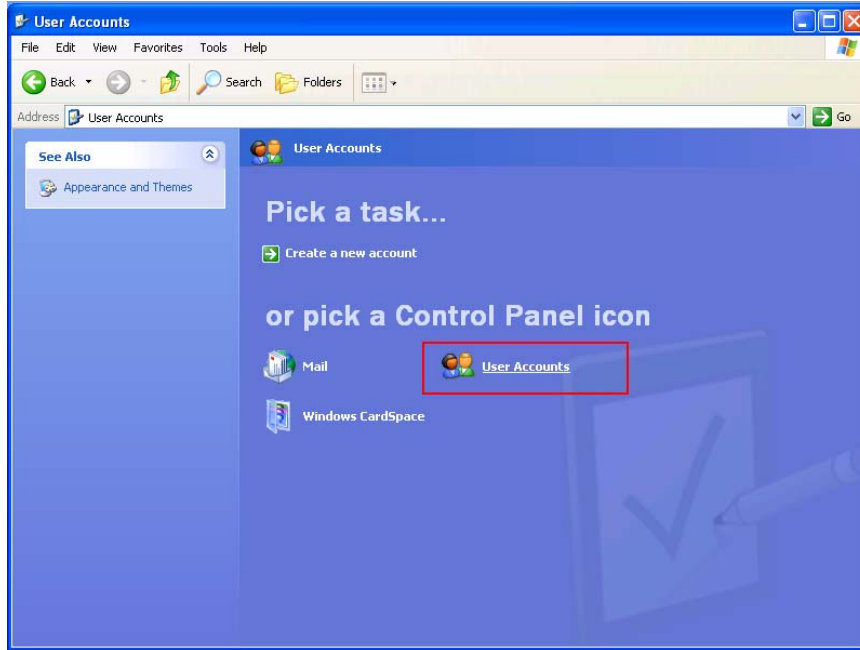
1. Klik Start Menu
2. Pilih Icon Control Panel



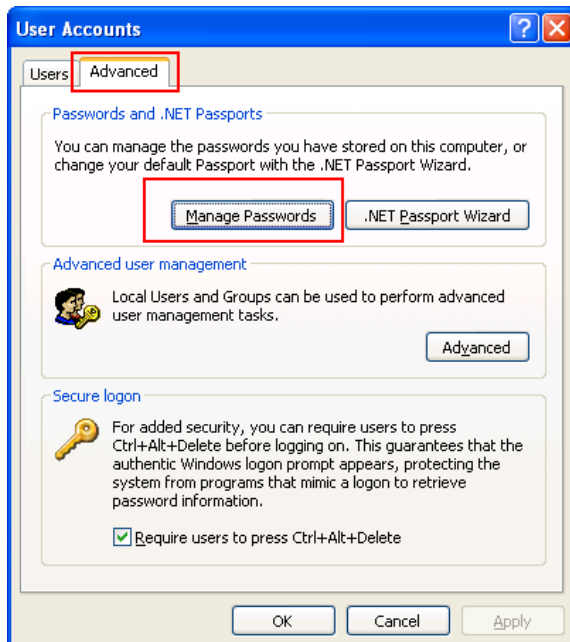
3. Pilih Category User Account



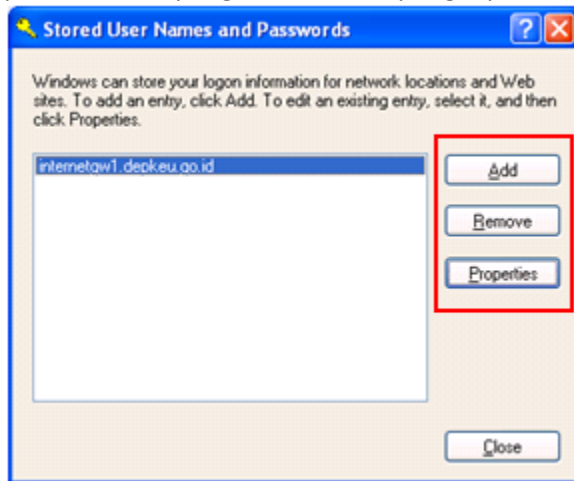
4. Pilih Control Panel Icon User Account



5. Setelah window User Account muncul, pilih Tab Advanced kemudian klik tombol Manage Passwords

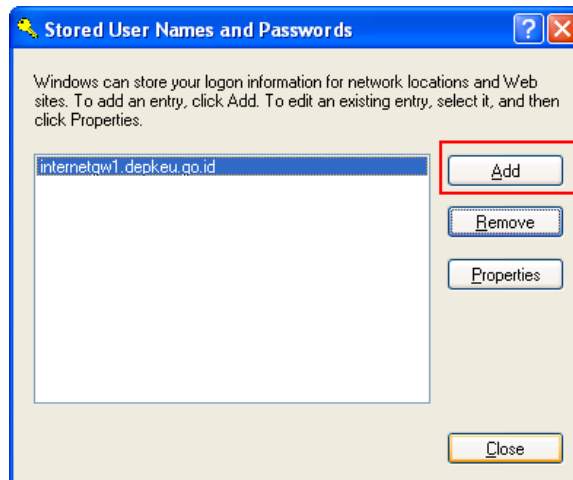


6. Setelah window Stored User Names and Passwords terbuka, maka dapat dilakukan penambahan, pengubahan, atau penghapusan (add/modify/remove) credential.



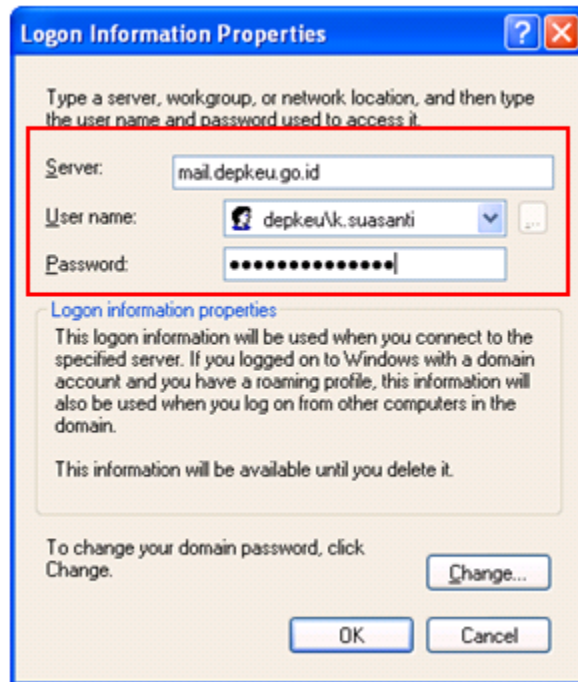
6.1. Penambahan (Add) Credential

- 6.1.(1) Pada window Stored User Names and Passwords, klik tombol Add



- 6.1.(2) Setelah window Logon Information Properties muncul, lengkapi field berikut :

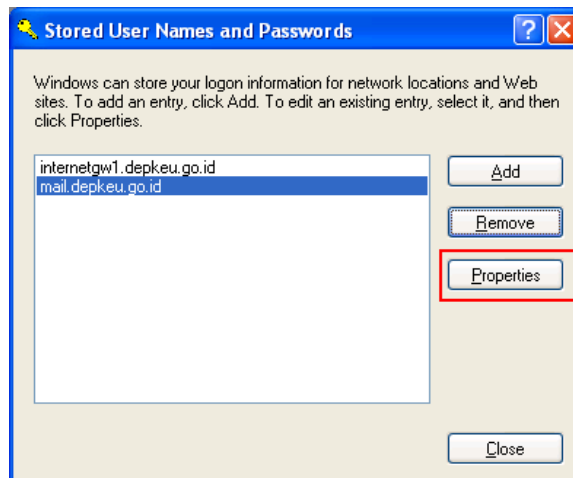
- Server : alamat server / url web yang akan diakses,
misal : mail.depkeu.go.id
- Username : username yang memiliki akses terhadap server / url web yang dimaksud, misal : depkeu\k.suasanti
- Password : password sesuai dengan username yang dimasukkan



- 6.1.(3) Klik tombol OK
- 6.1.(4) Klik tombol Close

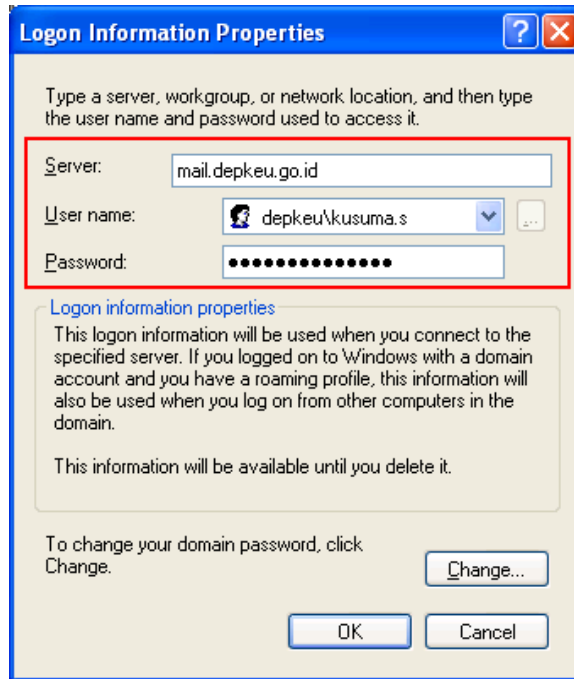
6.2. Perubahan (Modify) Credential

- 6.2.(1) Pada window Stored User Names and Passwords pilih credential yang akan diubah



6.2.(2) Klik tombol Properties

6.2.(3) Setelah window Logon Information Properties muncul, ubah data sesuai kebutuhan

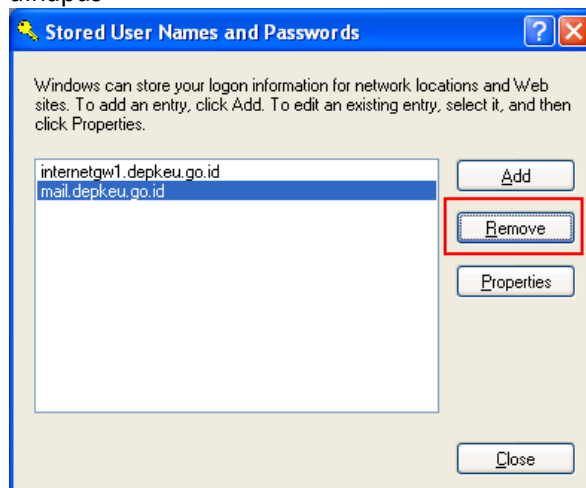


6.2.(4) Setelah selesai, klik tombol OK

6.2.(5) Klik tombol Close

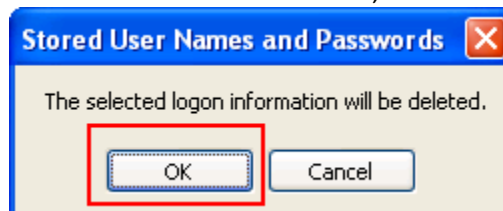
6.3. Penghapusan (Remove) Credential

6.3.(1) Pada window Stored User Names and Passwords pilih credential yang akan dihapus



6.3.(2) Klik tombol Remove

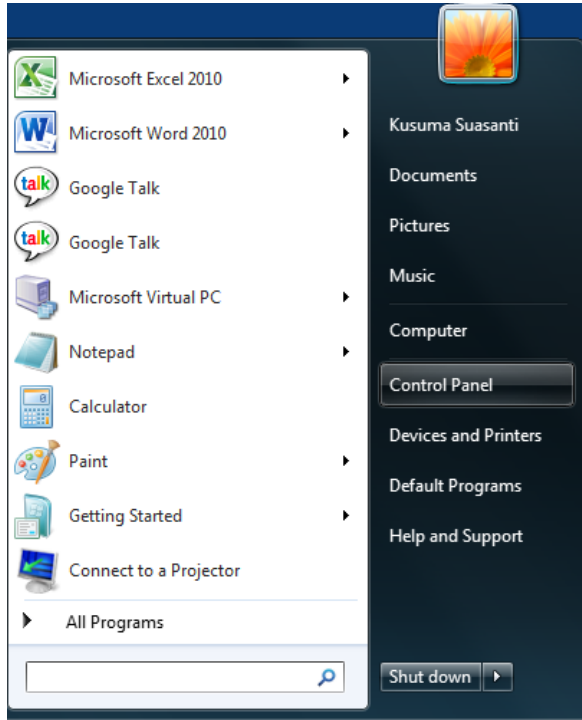
6.3.(3) Saat muncul window notifikasi, klik tombol OK



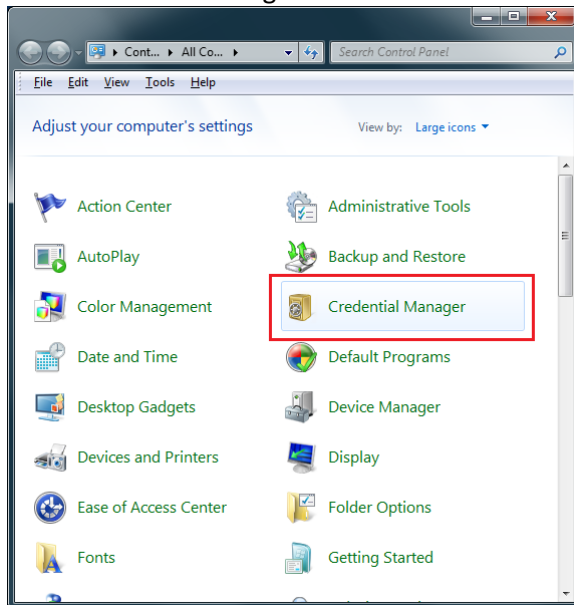
6.3.(4) Klik tombol Close

B. Credential Manager pada OS Windows 7

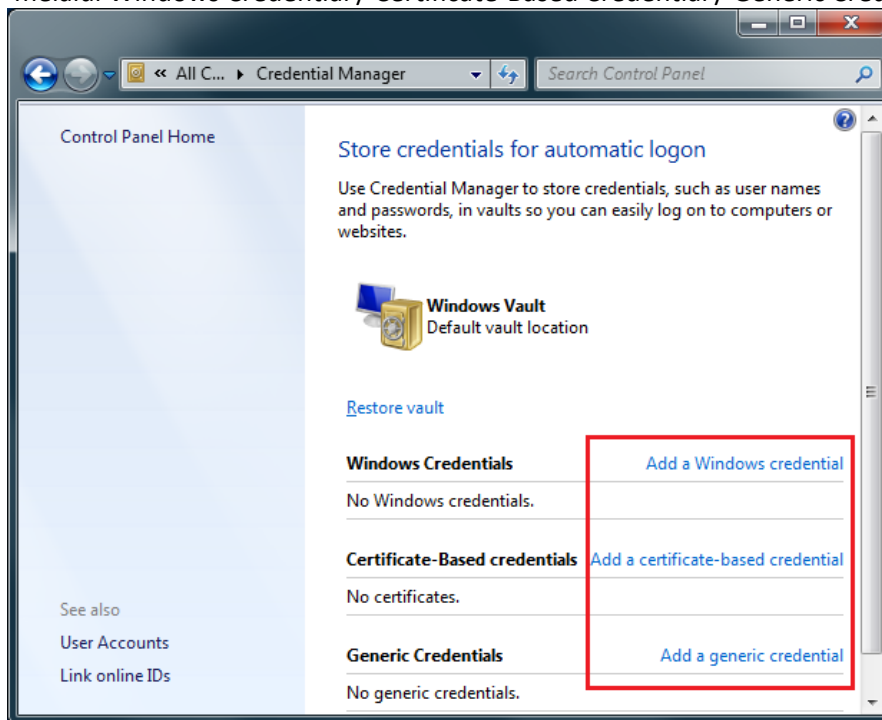
1. Klik Start Menu
2. Pilih Icon Control Panel



3. Pilih Credential Manager

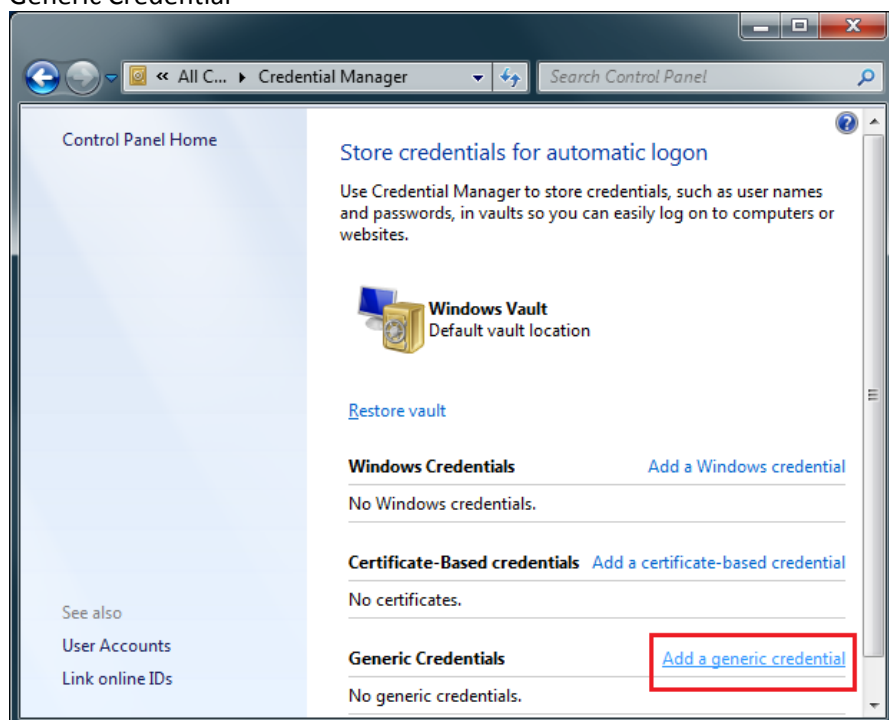


4. Setelah window Stored Credentials for Automatic Logon terbuka, maka dapat dilakukan penambahan, perubahan, atau penghapusan (add/modify/remove) credential baik melalui Windows Credential / Certificate-Based Credential / Generic Credential.

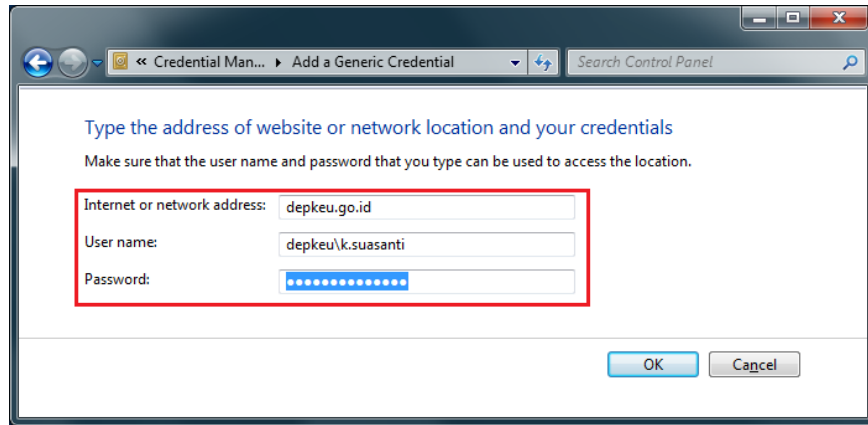


4.1. Penambahan (Add) Credential

- 4.1.(1) Pada window Stored Credentials for Automatic Logon, klik tombol Add A Generic Credential



- 4.1.(2) Setelah window Logon Information Properties muncul, lengkapi field berikut :
- Internet / Network Address :
alamat internet / network address yang akan diakses, misal : depkeu.go.id
 - Username :
username yang memiliki akses terhadap internet / network address dimaksud, misal : depkeu\k.suasanti
 - Password :
password sesuai dengan username yang dimasukkan

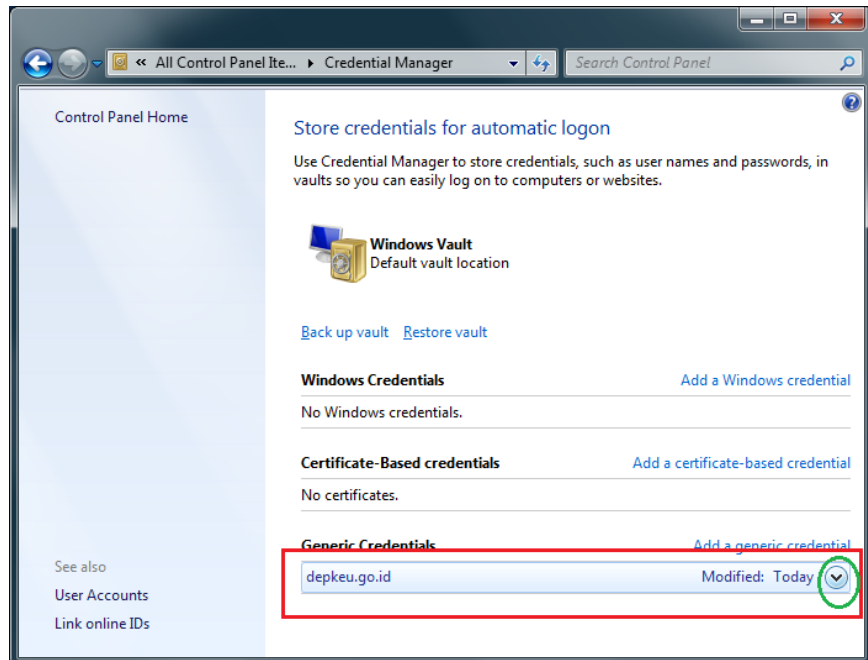


4.1.(3) Klik tombol OK

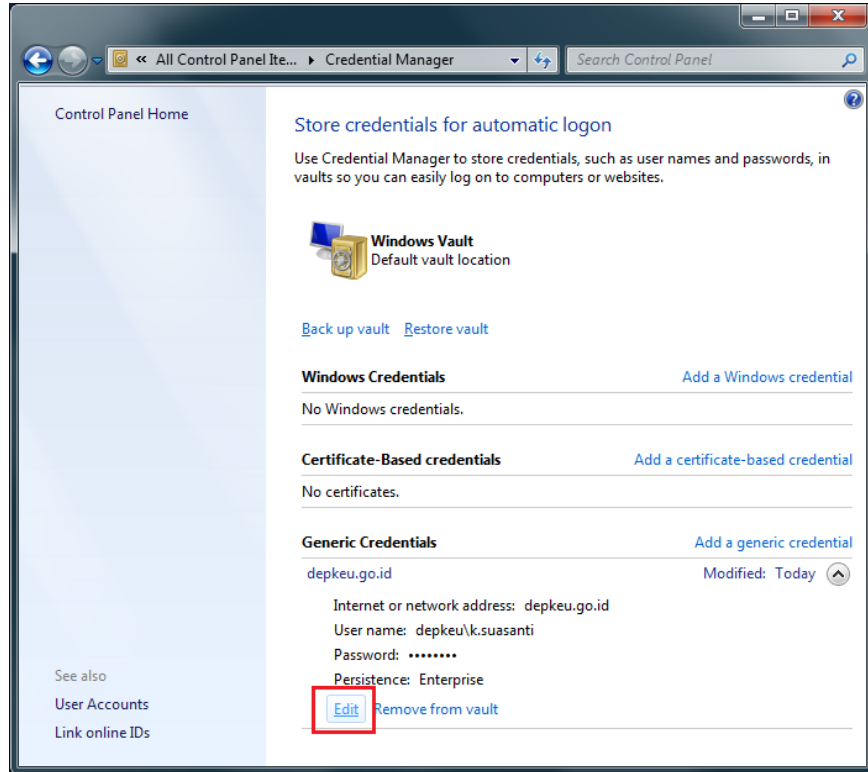
4.1.(4) Klik Close

4.2. Perubahan (Modify) Credential

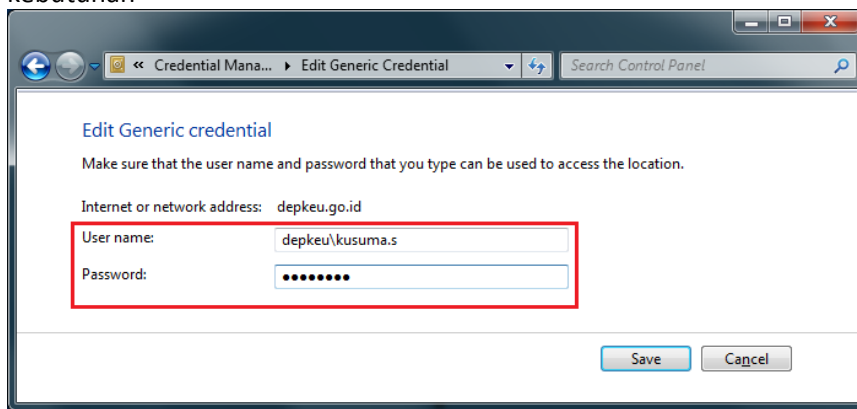
4.2.(1) Pada window Stored Credentials for Automatic Logon pilih credential yang akan diubah



4.2.(2) Klik Edit



4.2.(3) Setelah window Logon Information Properties muncul, ubah data sesuai kebutuhan

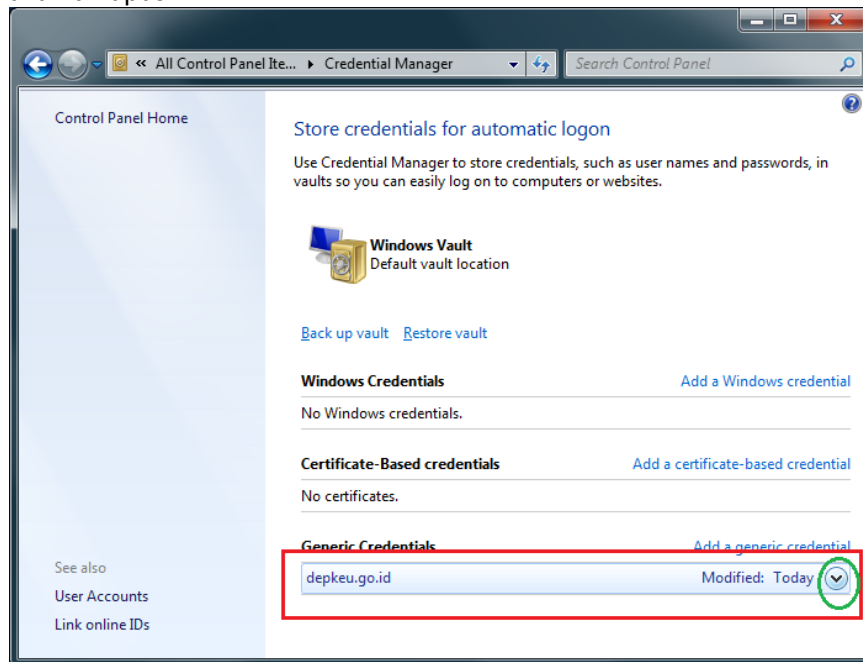


4.2.(4) Setelah selesai, klik tombol Save

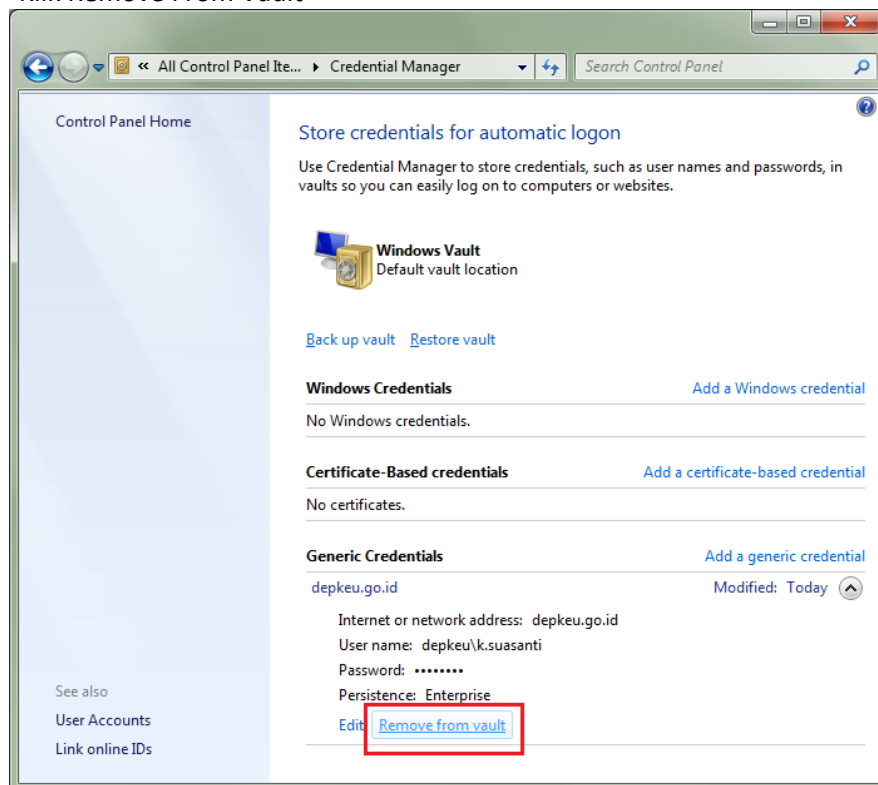
4.2.(5) Klik Close

4.3. Penghapusan (Remove) Credential

4.3.(1) Pada window Stored Credentials for Automatic Logon pilih credential yang akan dihapus



4.3.(2) Klik Remove From Vault



4.3.(3) Saat muncul window notifikasi, klik tombol Yes kemudian Close

